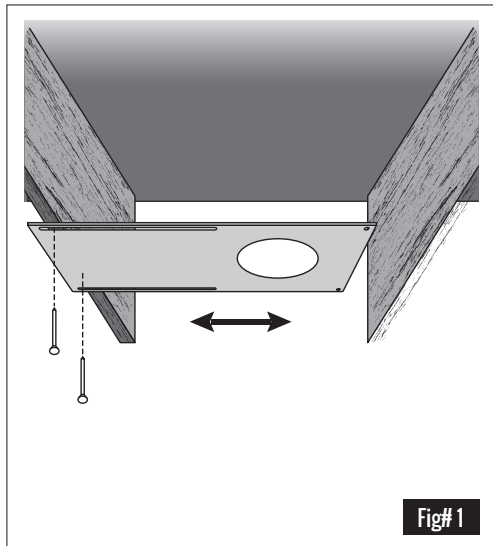
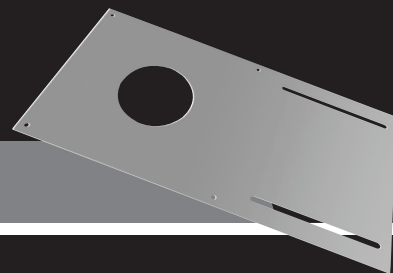
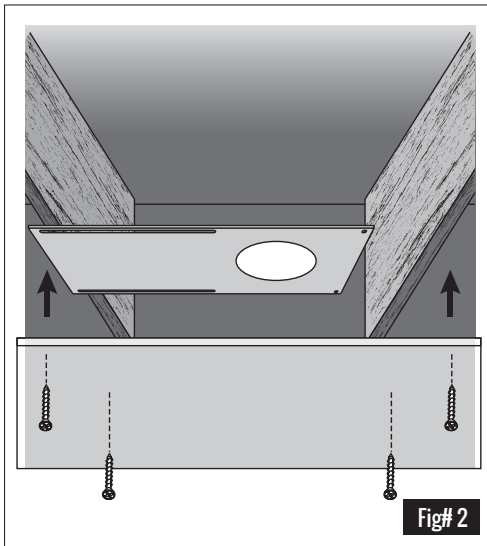


## INSTALLATION FOR FLUSH MOUNT DLSGR3-RIP3

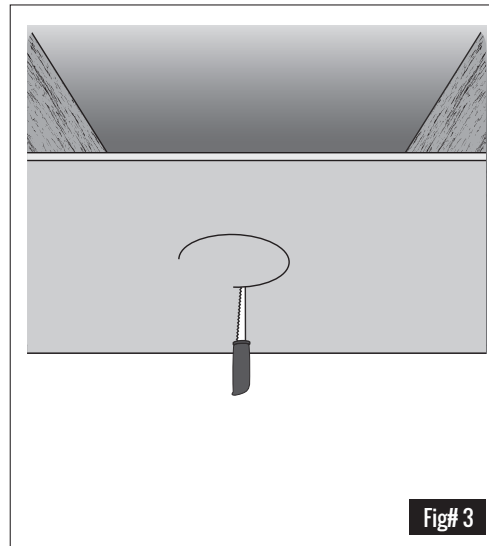
SAVE THESE INSTRUCTIONS - READ ALL INSTRUCTIONS CAREFULLY



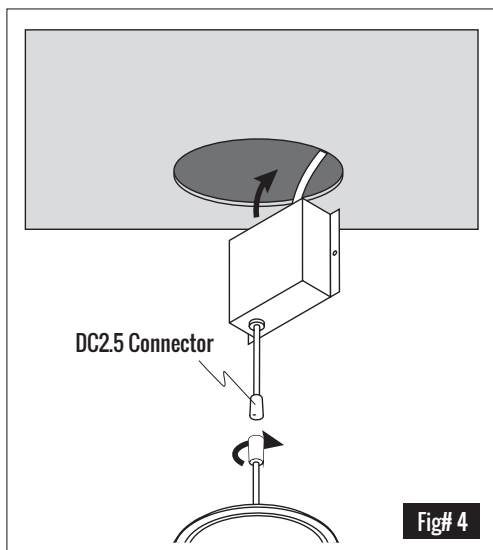
Fig# 1



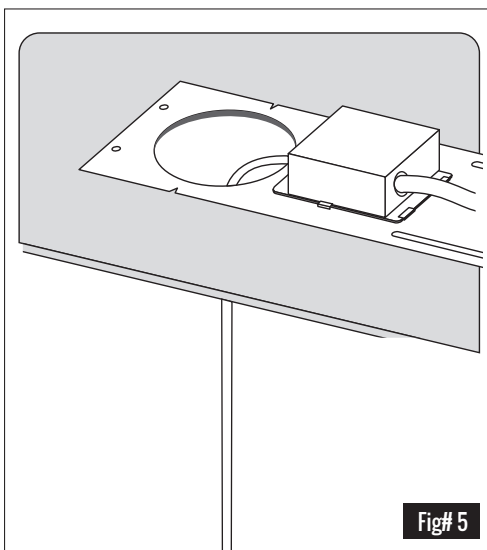
Fig# 2



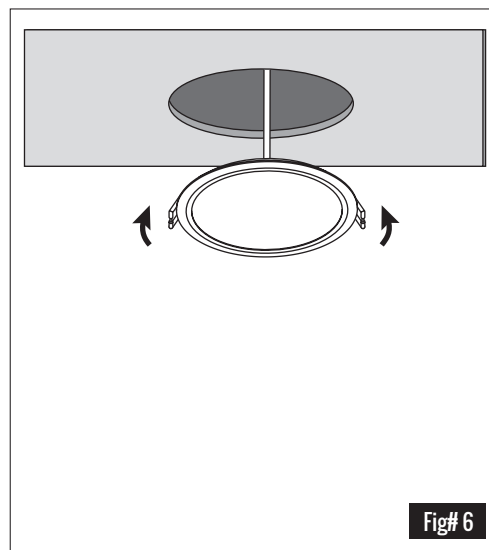
Fig# 3



Fig# 4



Fig# 5



Fig# 6

### IMPORTANT:

Read all instructions before installing plate. Retain for future reference.

### SAFETY:

Turn off power at fuse/breaker panel before attempting any electrical work. This luminaire must be wired in accordance with local electrical codes and ordinances. Grounding connections should be done in the detachable junction box.

### WARNING:

Make sure power is turned off from the electrical panel before starting installation or attempting any maintenance. indoor installation only.

### INSTALLATION:

1. Nail in the mounting plate to the ceiling joist. Measure the position of the opening on the mounting plate from each wall. (Fig. 1)
2. Install the drywall on the ceiling. (Fig. 2)
3. Cut out a circle where the mounting plate opening is located. (Fig. 3)
4. Pull the supply wire through the cut out hole. Apply the electrical connection in the JBox (NOTE: A licensed electrician must perform the electrical connections as per local electrical code. Insert JBox into ceiling. (Fig. 4)

5. Secure the JBox by attaching it to the snap in clips on the plate. (Fig. 5)

6. Connect the luminaire with the DC2.5 connector. (Fig. 5)

7. Push the spring clips upwards and push the luminaire into the cut hole of the ceiling. Release the spring clips and align the luminaire to sit properly over the ceiling cut hole. (Fig. 6)

8. Switch on the supply breaker and turn on the luminaire.

**PLATE: Compatible Fixtures - DLSGR**

**HOLE SIZE: DLSGR3-RIP3 - 2.756" / 70mm**